



Multicentre Preclinical Animal Research Team

Multi-PART – WP1

Project management, training, and
dissemination



Task 2: Define requirements for study sites

- opinions of international experts
 - most important characteristics of study sites for a multi-centre trial
- Delphi technique
 - 3 rounds of questionnaires
 - aim: reach consensus



questionnaire 1

- 26 characteristics
 - 21 – site
 - 5 – principal investigator



characteristics

When selecting study sites for a multi-centre animal stroke trial, how important do you consider the following criterion:

Length of expertise in stroke modelling

0: not important at all ... 6: extremely important
possibility to comment



questionnaire

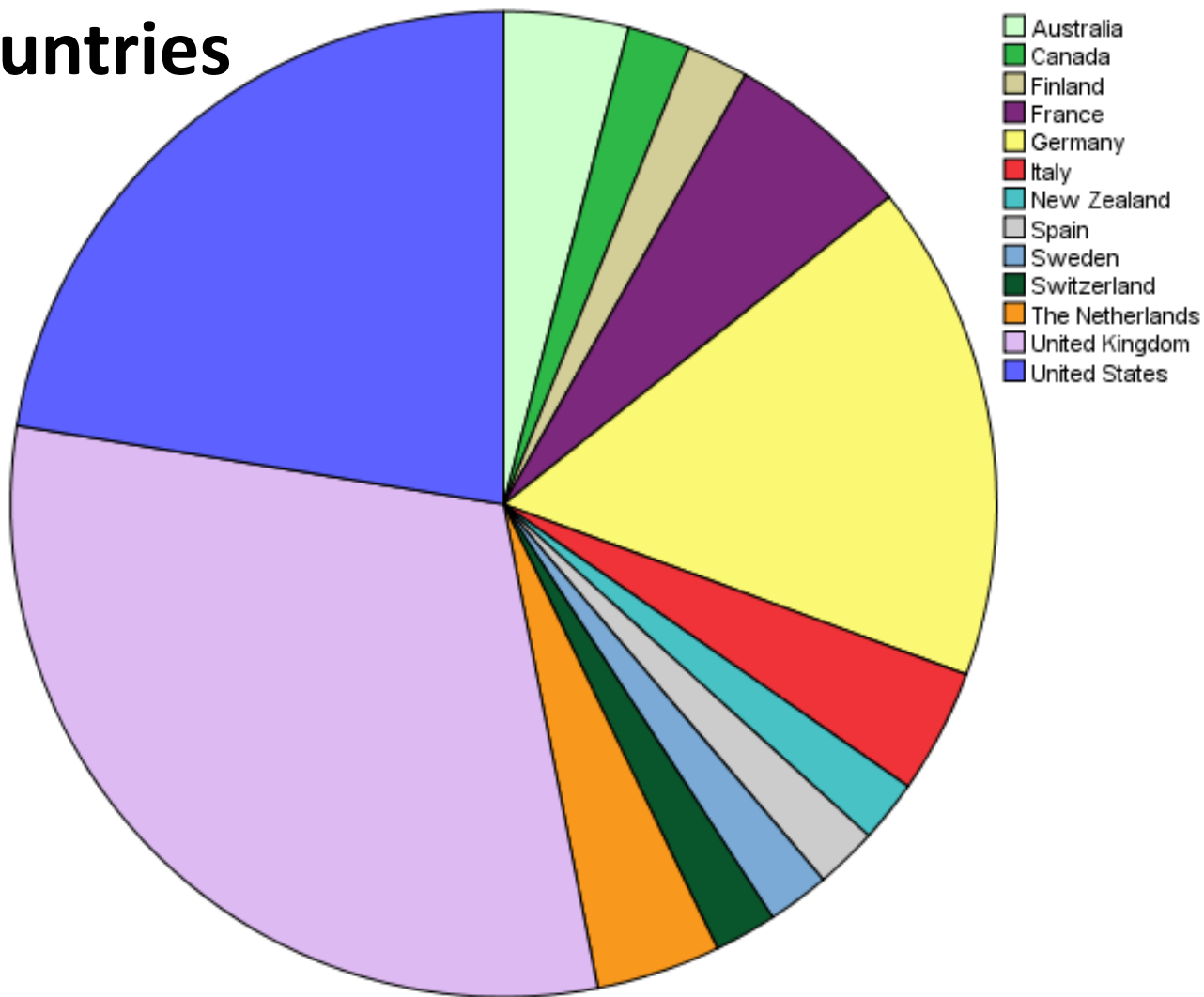
- opened: 8 July 2014
- closed: 18 July 2014
- 85 persons invited
- 49 (58%) responded



results first round



countries





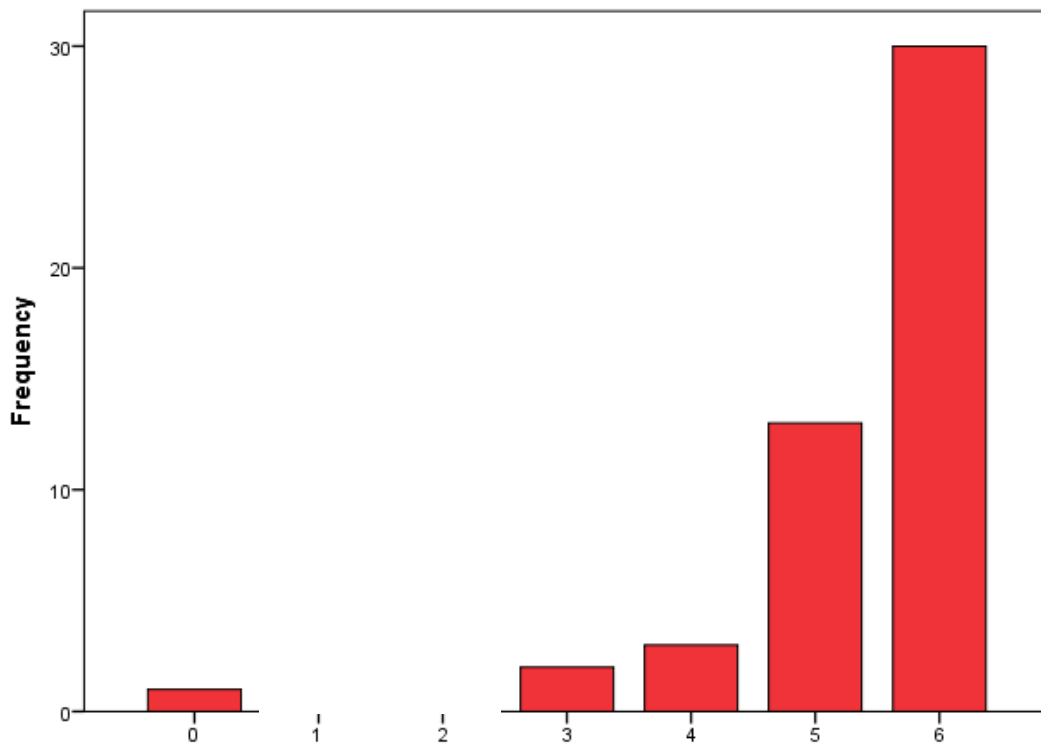
median scores

median score	number characteristics
6	1
5	6
4	9
3	9



median score: 6

- evidence of adherence to ethics regulations





comments

- self-evident
- hard to judge from publications
- evidence of malpractice might be an indicator of lack of suitability, but the converse is not true. ... Having the paperwork doesn't mean the welfare of the animals was actually assured



question

- How to assess 'adherence to ethics regulations'?



median score: 3

- median impact factor of journals in which the site's original articles were published
- possibility to work with both mice and rats
- experience with
 - photothrombotic models
 - external MCA occlusion
 - thrombo-embolic models

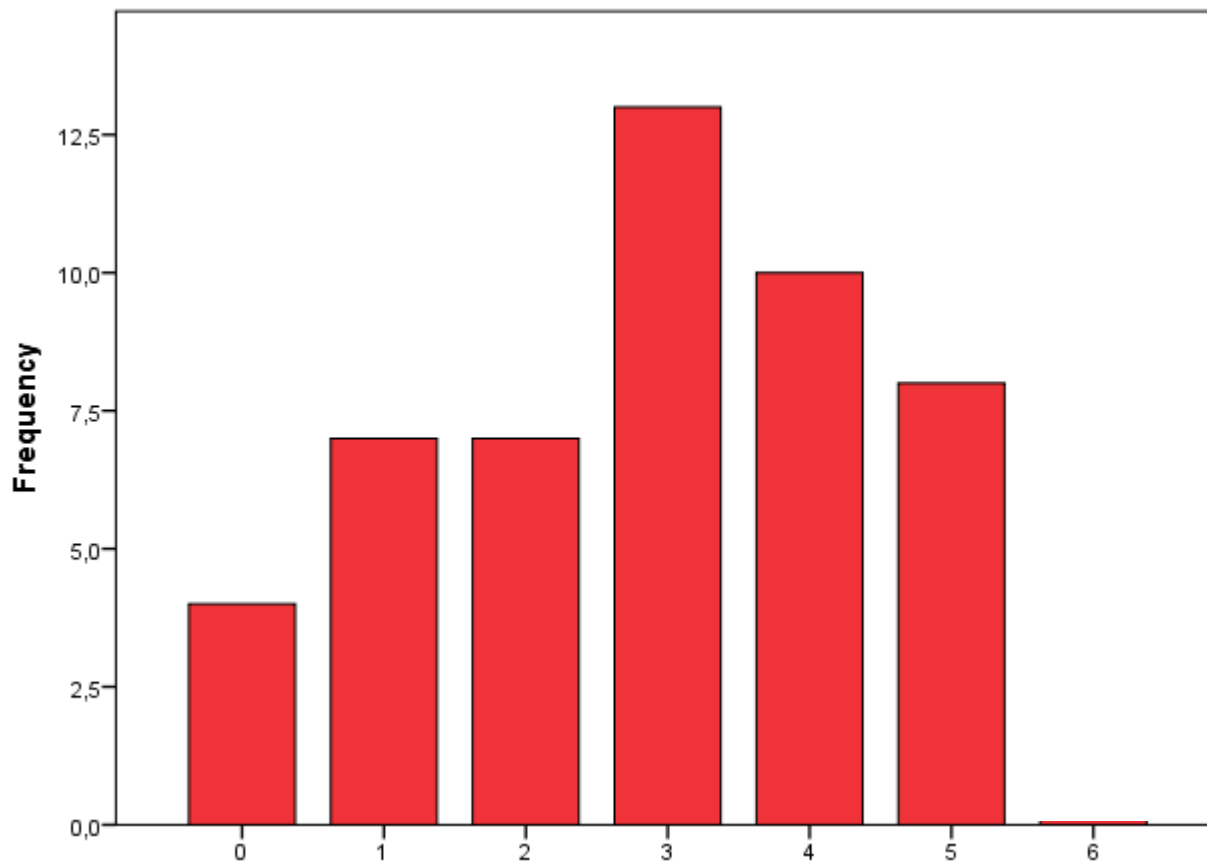


median score: 3

- possibility to perform
 - MRI
 - TTC staining
- H-index PI
- median IF of journals in which PI's original articles were published



median impact factor of journals in which original articles were published





proposal:

- Consider all characteristics with a median score of 3 as irrelevant to future study sites

agree?



median score: 5

- length of expertise in stroke modelling
- evidence of appropriate methodological quality
- possibility to control all physiological parameters
- possibility to perform histology
- experience with behavioural testing
- length of PI's expertise in stroke modelling



median score: 5

- length of expertise in stroke modelling
- evidence of appropriate methodological quality
- possibility to control all physiological parameters
- possibility to perform histology
- experience with behavioral testing
- PI: length of expertise in stroke modelling



comments – length of expertise

- the more experience you have the better
- at least 2-3 years expertise in stroke modelling
- even after 15 years of using animal models, I learn constantly
- quality is more important - you may have been doing it badly for many years!
- this might exclude me from participating (!)



questions

- important indeed?
- minimum duration of expertise?



median score: 5

- length of expertise in stroke modelling
- evidence of appropriate methodological quality
- possibility to control all physiological parameters
- possibility to perform histology
- **experience with behavioural testing**
- PI: length of expertise in stroke modelling



comments – experience behavioural testing

- A large percentage of behavioral studies are **conducted poorly**. I also know a number of people analyzing and expressing their data incorrectly, and reporting false positives.
- Behavior is really the crux of the issue. If the intervention doesn't improve outcome, nothing else really matters.
- People assume they can do this, but interrater testing and reliability should be required.



questions

- Which tests?
- Test interobserver variation?
- How can this be done?



median score: 5

- length of expertise in stroke modelling
- evidence of appropriate methodological quality
- possibility to control all physiological parameters
- **possibility to perform histology**
- experience with behavioral testing
- PI: length of expertise in stroke modelling



comments – possibility to perform histology

- if an MR is available, histology may not be mandatory
- as long as tissue preps can be properly done, then others could do this.



question

- important indeed?



median score: 4

- number of original articles in previous 5 years
- number of citations of these articles
- evidence of a small variation in infarct size
- evidence of ongoing funding and institutional support
- current fte of scientific staff
- current fte of technicians

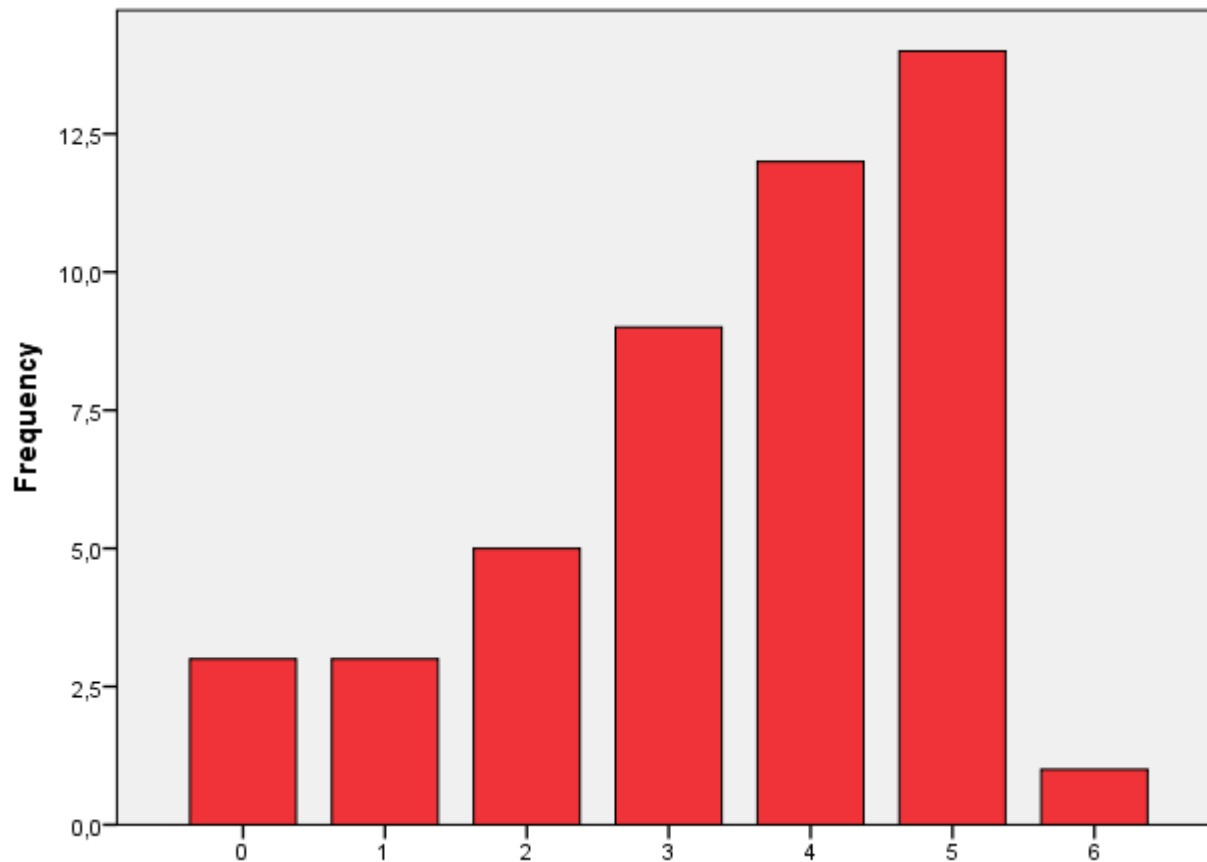


median score: 4

- experience with endovascular MCAo
- possibility to perform immunohistochemistry
- number of PI's original articles ≤ 5 years
- evidence of continuing professional development



small variation in infarct size





comments – small variation in infarct size

- depends on the model
- evidence of low variation (if unconfounded) is a good thing
- if there is small variation, I am suspicious..

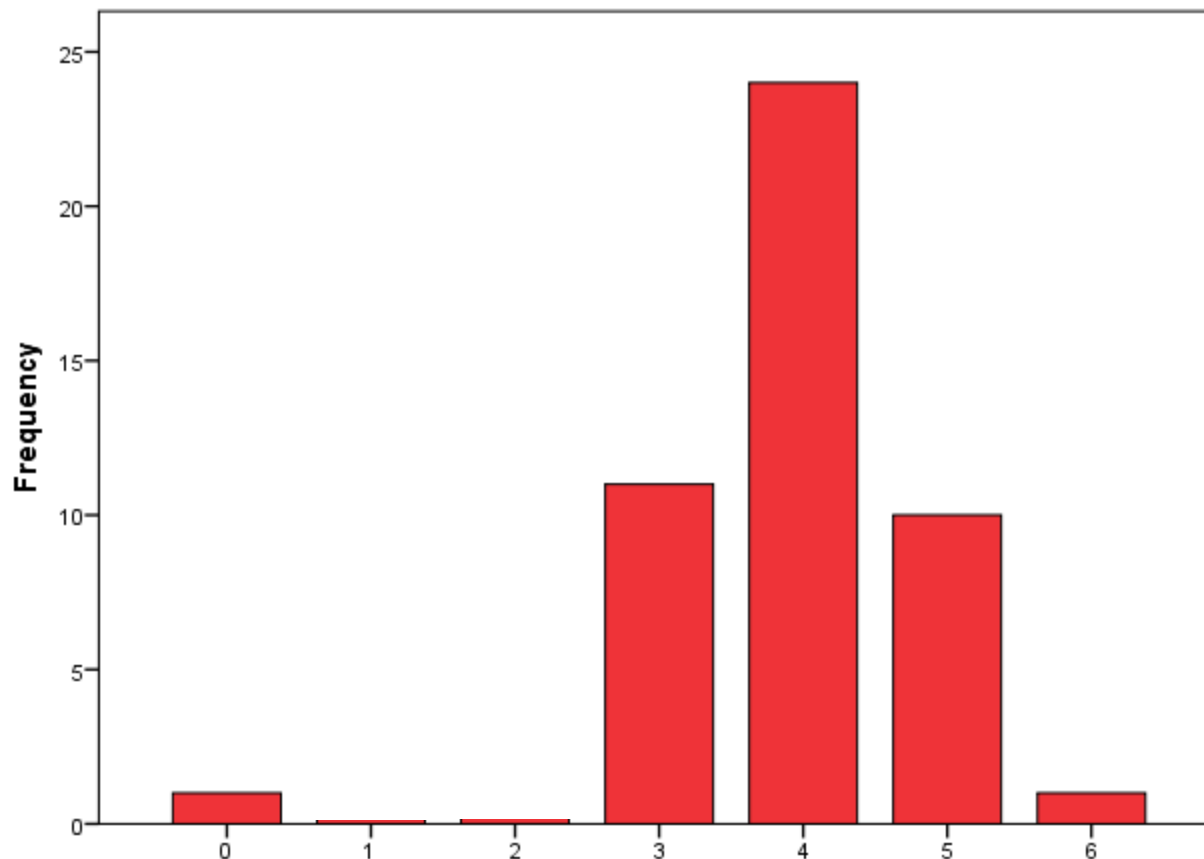


questions

- important indeed?
- if yes, what should be the requirements?



number of articles by PI ≤ 5 years





comments – number of articles by PI \leq 5 years

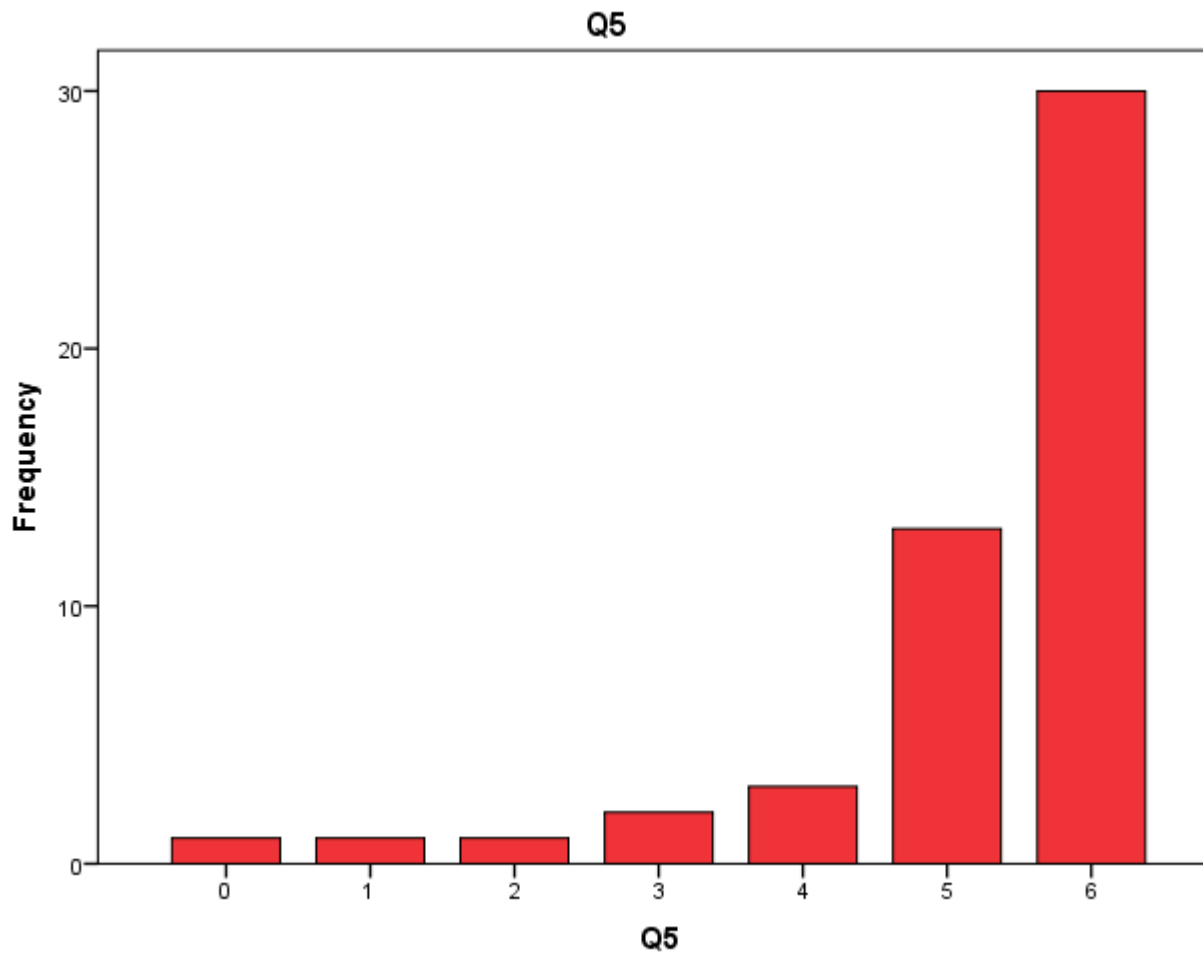
- didn't you ask this already?
- quality and not quantity is important
- good indicator of research productivity.
- at least 3 in the last five years



questions

- important indeed?
- if yes, what should be the minimum?

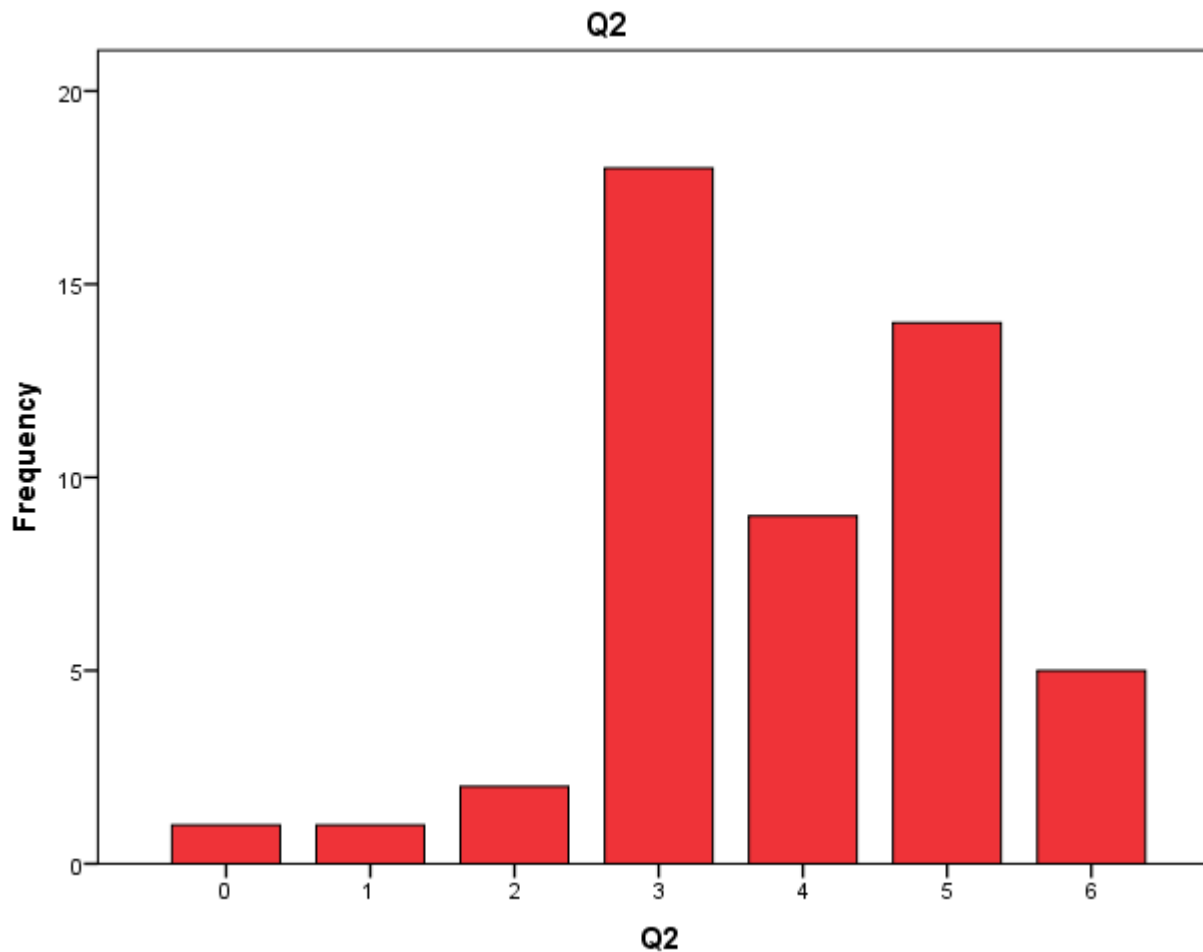




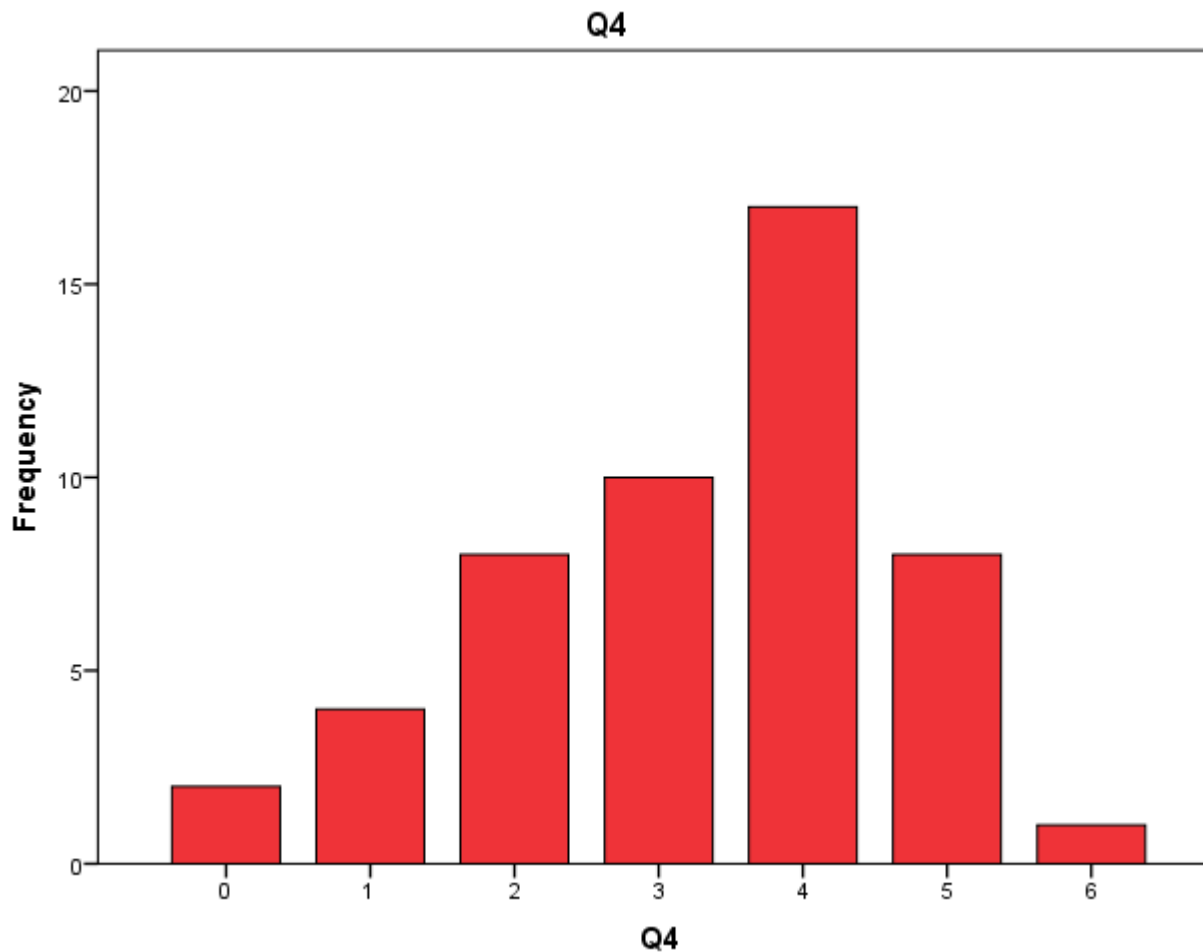
Delete 1 and 2



Delete 6

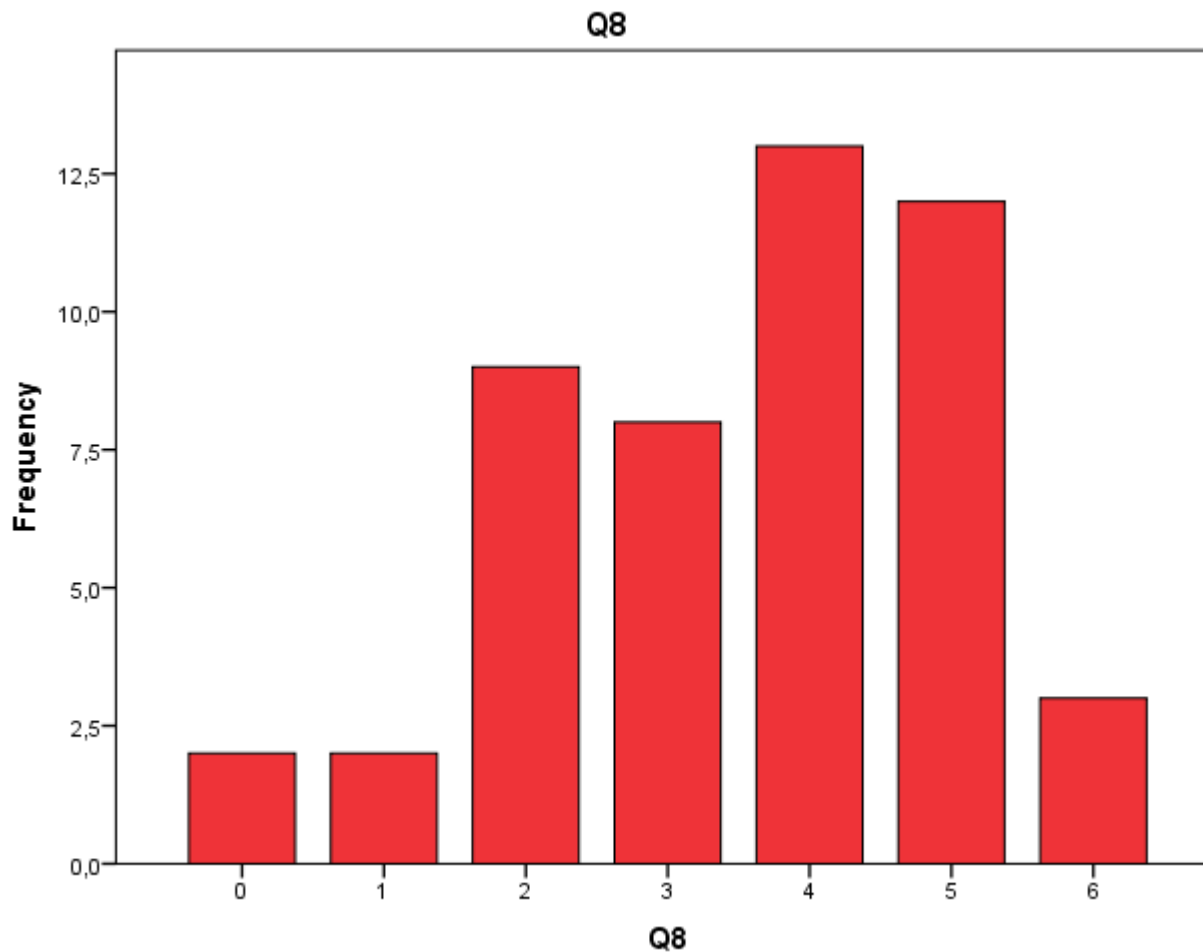


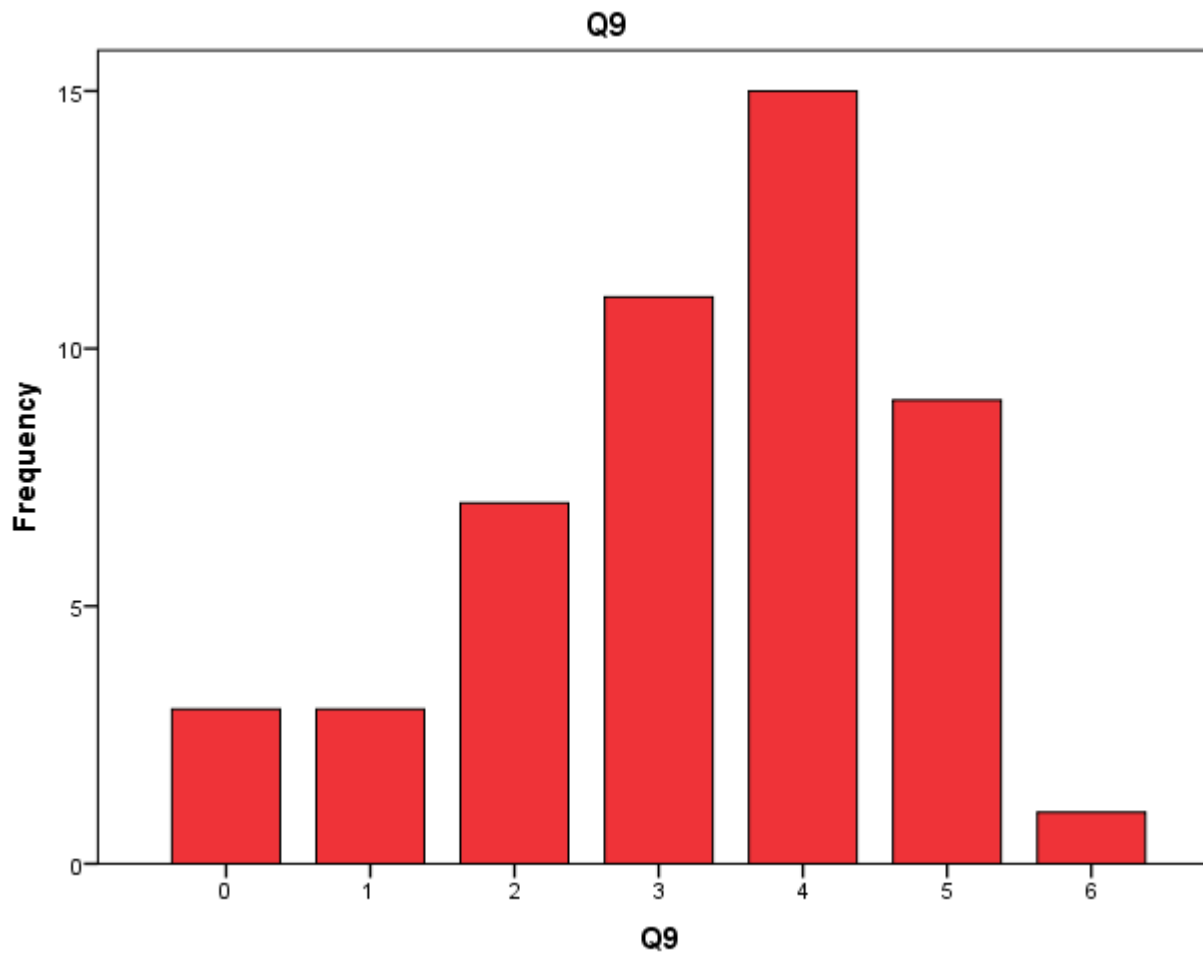
Delete 0

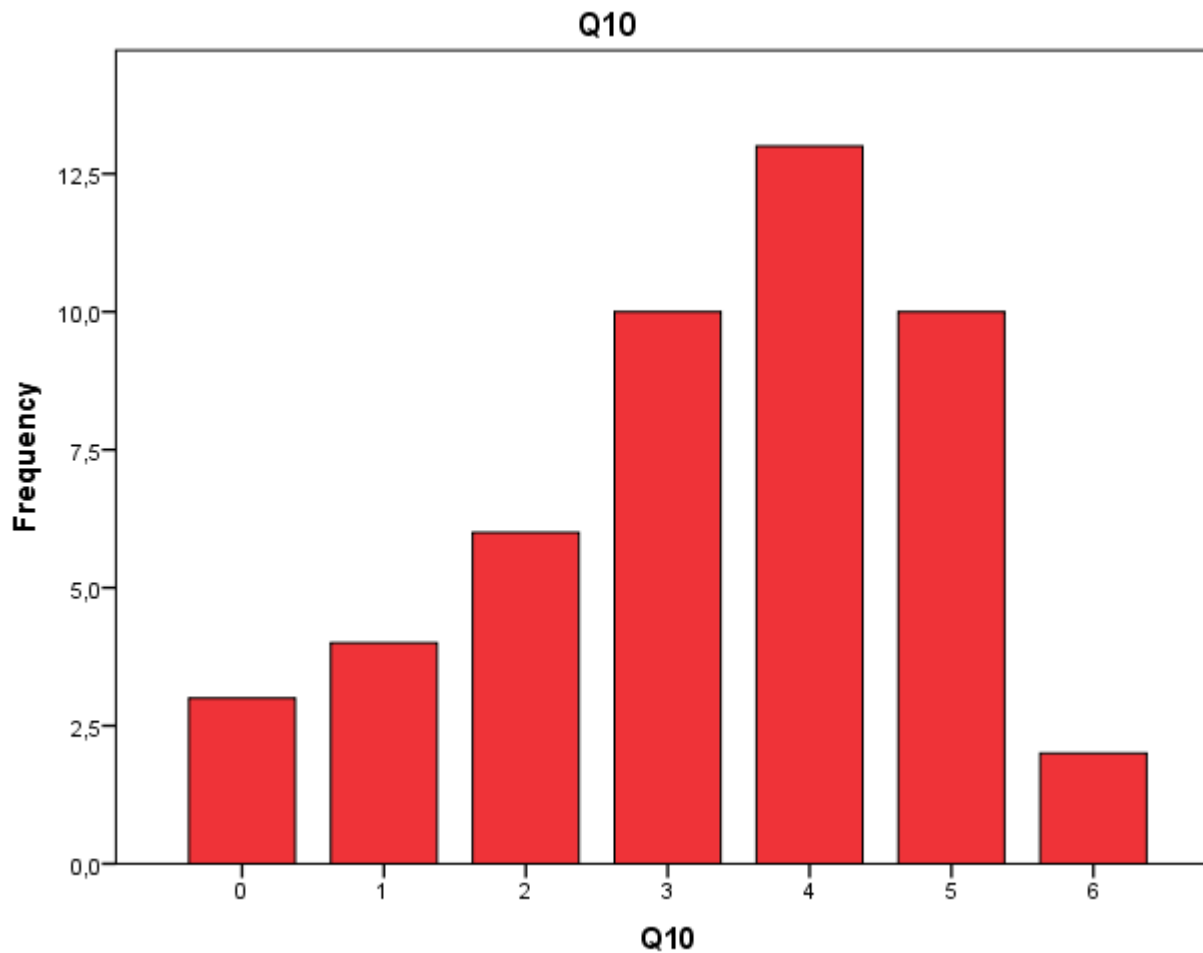


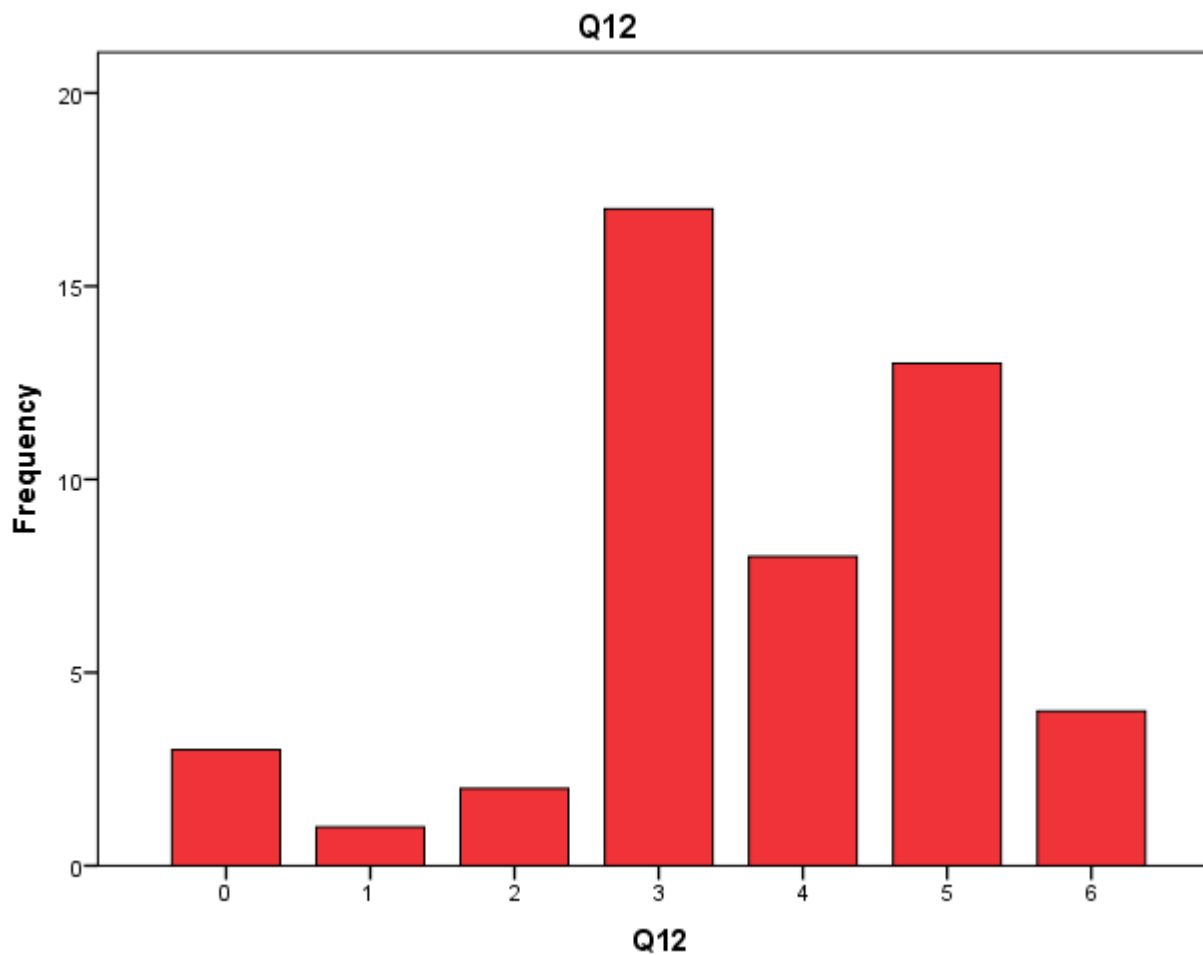
Delete 6



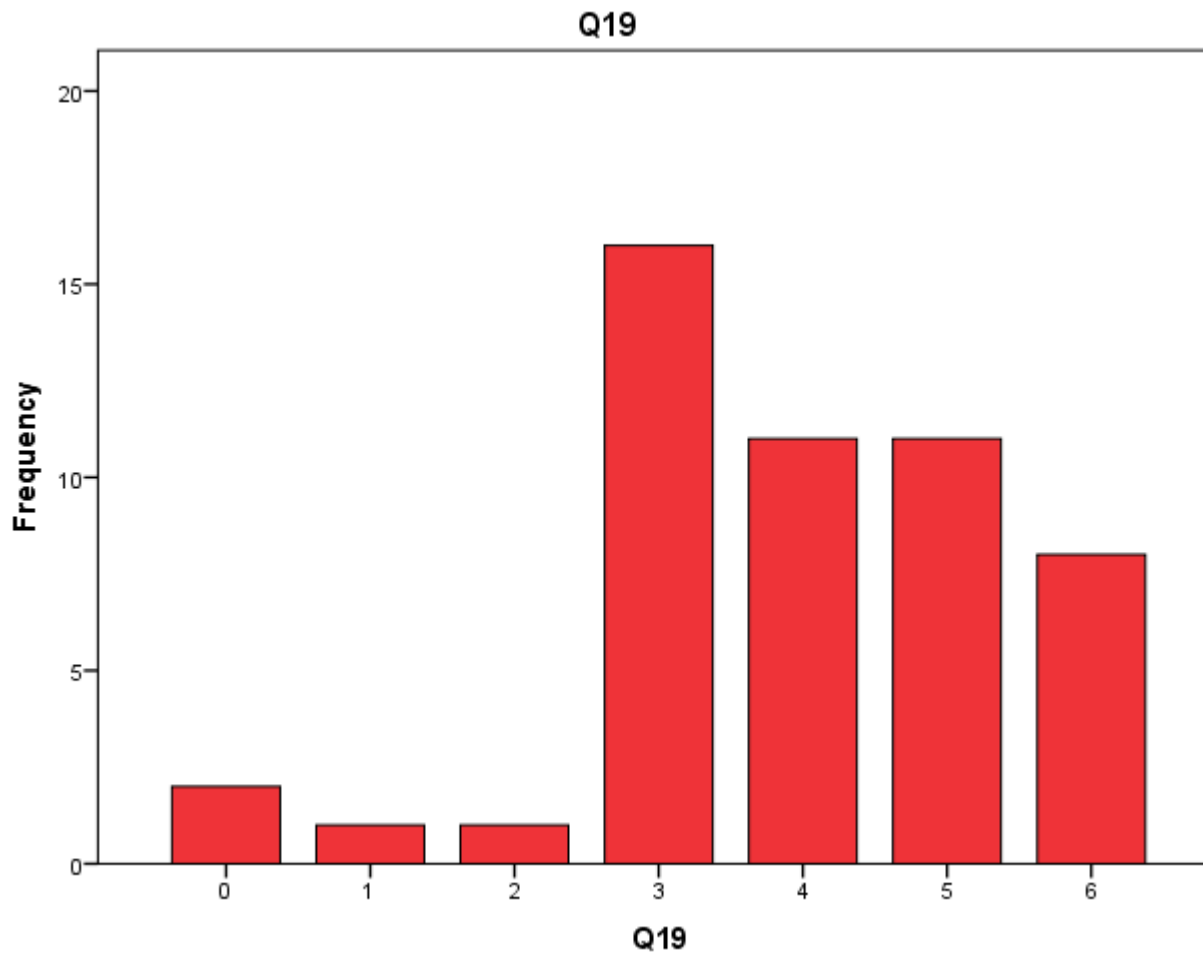




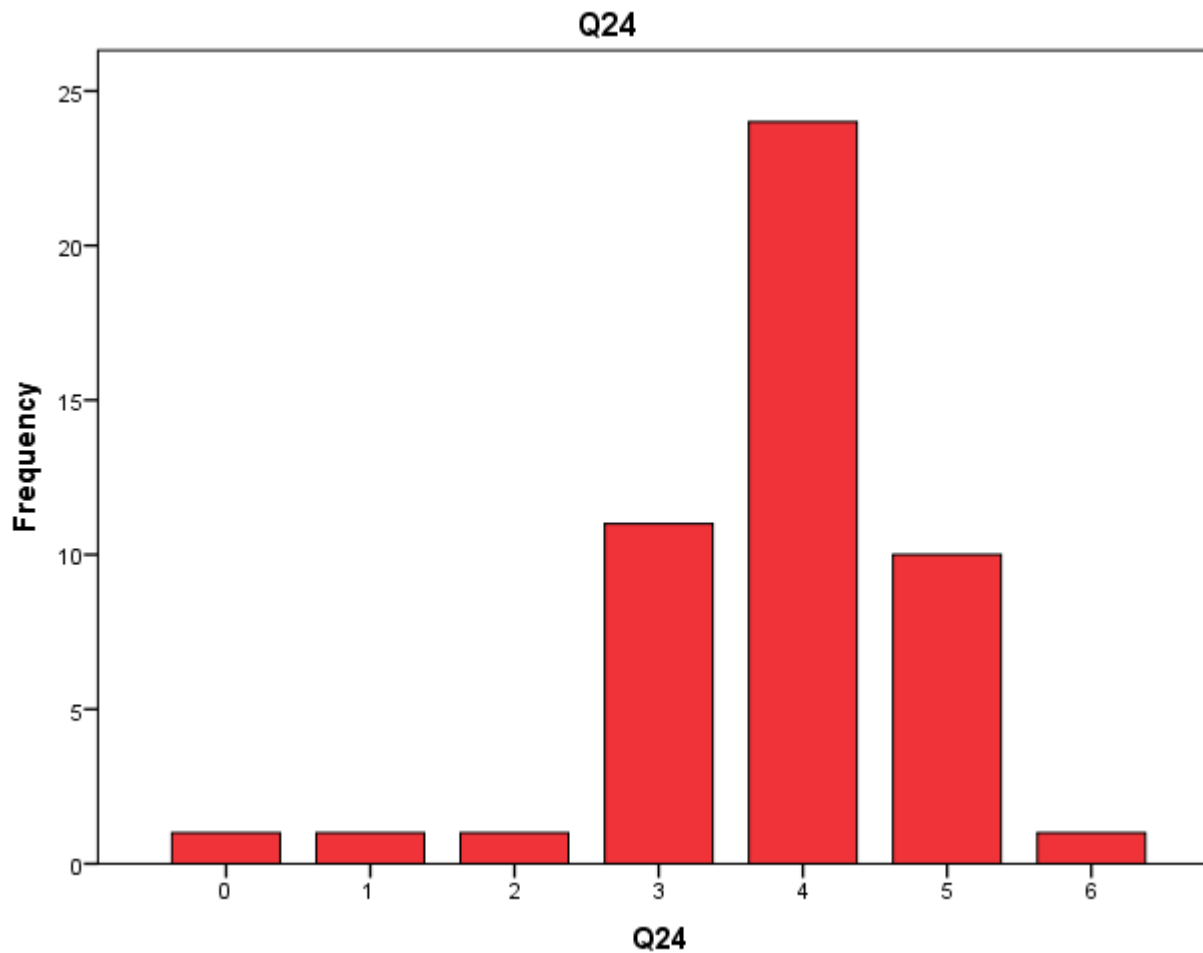




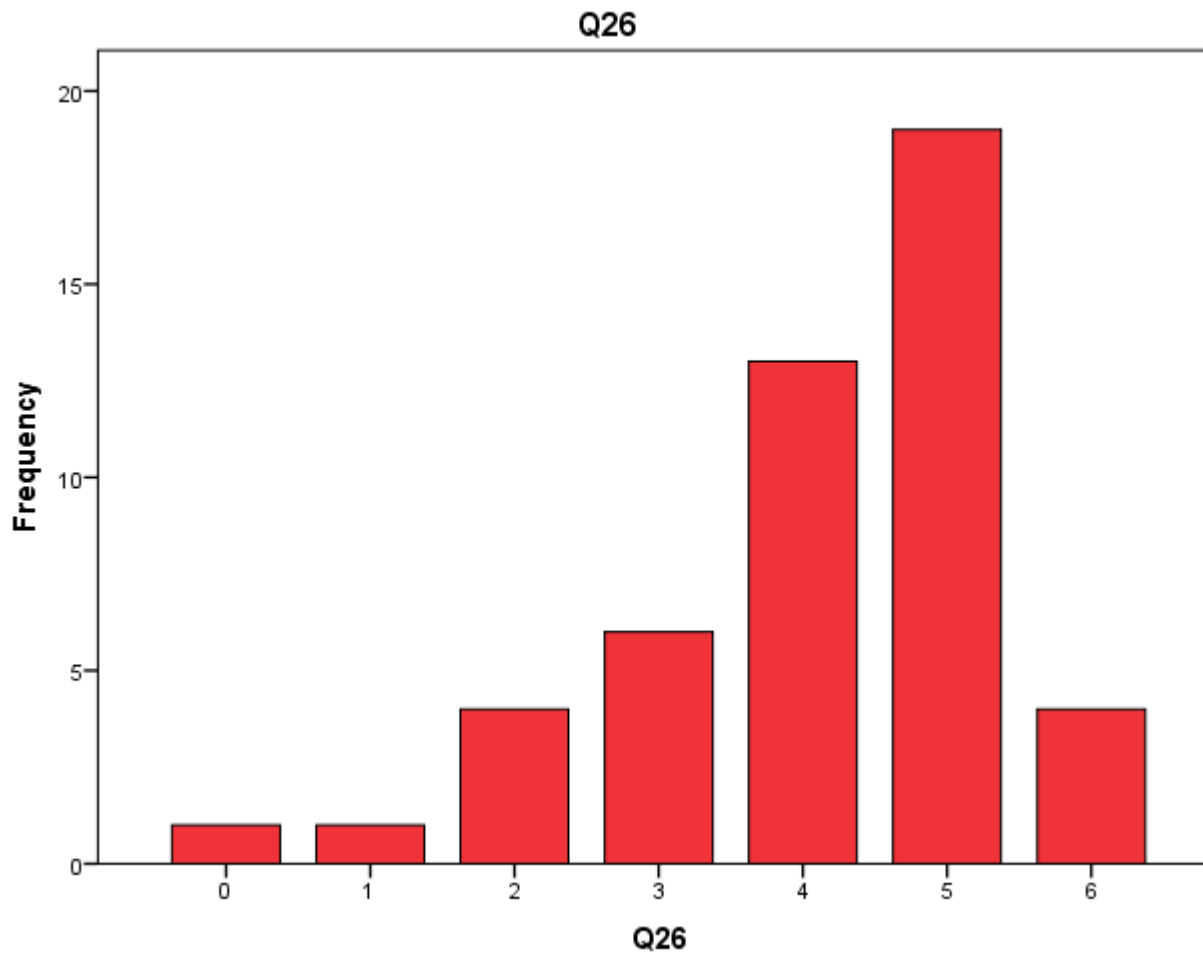
Delete 1



Delete 2



Delete 1 and 2



Delete 1

